

Bournemouth Christchurch and Poole Council

School Place Planning Strategy 2021-2024

Introduction

This is BCP Council's first mainstream school place planning strategy. It sets out how school places will be managed to ensure that parents of all children living in Bournemouth Christchurch and Poole can obtain a good school place within a reasonable distance of home, and how the council will work with schools and academies to ensure there are neither too few nor too many school places.

This strategy will be of interest to parents, schools, academies, the local community, neighbouring councils, the Department for Education, the Regional Schools Commissioner, and to developers considering building new housing in the area.

The strategy supports the values set out in BCP Council's Corporate Strategy – particularly the "Brighter Futures" priority:

"Caring for our children and young people; providing a nurturing environment, high quality education and great opportunities to grow and flourish."

By ensuring that the supply of school places is well managed, we can better plan investment in the school estate – providing new capacity when and where needed, and making the best possible use of under-utilised space.

The strategy is not intended to bring forward specific proposals for reorganising school provision, but rather to provide a framework for decision making including a look ahead to potential future challenges.

This strategy sets out the future demand for mainstream pupil places. It highlights current and future challenges in meeting our statutory duty to provide sufficient school places. It does not address future demand for pupils with special educational needs and disabilities. That will be addressed in a separate strategy. It does however encourage schools to move towards more inclusive practice. Where surplus accommodation exists a potential alternative use could be to provide better facilities for pupils with SEND.

It will be used to inform the Council and schools when developing and approving policies and plans, such as changing admissions policies or published admission numbers and deciding how best to use Basic Need capital grant provided by the Department for Education, or Section 106 and Community Infrastructure Levy contributions from housing developers, to invest in new school places when required.

A Children's Services Capital Strategy is under development alongside this strategy, which will set out in more detail how the Council plans to invest in the school estate.

This strategy will be reviewed annually with updated school data. A fully revised strategy will be developed no later than 2024-25.

BCP Council has a statutory responsibility to ensure there are sufficient school places for resident children whose parents want one. The Council also needs to ensure that schools are viable, educationally, and financially. On occasion that can mean reducing surplus places. This strategy set out how we will plan school places for the next three years and beyond.

All schools have considerable autonomy, and academies are independent of the council in many respects. This means that planning for the future must be done in partnership. The council, school governing bodies, academy trusts, diocesan boards of education, the regional schools commissioner, and the secretary of state for education all have a role in decision making. Decisions about future school provision are important to children and families, to school staff, and the wider community. This strategy is therefore of wide potential interest.

The headline message for the coming three years is that primary school numbers will fall because of lower birth numbers, and that secondary school numbers will increase as the current primary school bulge ages through to the secondary phase. Whilst this broadly describes the likely position, it varies from one place to another, therefore this strategy looks at the position by planning area.

The primary planning areas which may experience the most significant drop in pupil numbers are:

South West Poole

West Bournemouth

Town Centre Bournemouth

East Christchurch

In these areas the delivery of new housing may mean that the fall in numbers is less than currently expected.

The bulge will affect all secondary planning areas – particularly the most densely populated areas of Central Poole, Bournemouth and Christchurch. Plans are already in place to add bulge classes at the Avonbourne Academies.

The intention of this strategy is to describe current organisational arrangements of schools in BCP and look ahead to likely challenges. It does not propose specific organisational changes, rather it sets the context for such changes should they be required.

Background

BCP Council came into existence on 1st April 2019, taking on responsibility for education. Previously Bournemouth Borough Council and the Borough of Poole were responsible for education in their respective areas, and Dorset County Council was responsible for education in Christchurch. The newly established Children's Services directorate has worked to ensure that day-to-day services have been maintained, and that strategic planning is integrated across the whole of BCP. Covid-19, first identified in late 2019, has had a big impact on schools and public authorities. As we emerge from the pandemic, the purpose of the school place planning strategy is to ensure we have a school system fit for the future.

Age phases

Schools are often organised by age phase. Children must be in full time education from the term following their fifth birthday. Many start school in reception in the autumn term after their fourth birthday. Most children remain in the national curriculum year group throughout their school life. Schools are organised in age phases. The following chart shows the various phases that can be found in BCP:

Age on 1st September	4	5	6	7	8	9	10	11	12	13	14	15	16	17
National Curriculum Year Group	YR	Y1	Y2	Y3	Y4	Y5	Y6	Y7	Y8	Y9	Y10	Y11	Y12	Y13
Infant														
Junior														
Primary														
Secondary (statutory school age)														
Post 16/6th Form														
First School														
Middle School														
Upper Secondary School														
All through														

It is the responsibility of the council to ensure that there are sufficient places in all age groups. BCP is generally organised by primary/secondary age phases; however one area is organised by first/middle/upper phases. There is also a small number of all through schools.

Governance

Schools can be governed and managed in various ways. The main types of school are:

- Academy or free school – a state-funded independent school responsible for its own admissions and employing its own staff, responsible to an academy board
- Community school – a state-funded school maintained by the local authority, which sets its admissions policy and employs school staff. The school has a governing body.
- Foundation or trust school – a state-funded school which sets its own admissions policy, employs its own staff, and often owns its own site outright. The school has a governing body.
- Voluntary aided school – a state funded school usually associated with a religious denomination, responsible for its own admissions and employing its own staff. The school has a governing body.
- Voluntary controlled school – a state funded school usually associated with a religious denomination, maintained by the local authority, which sets its admissions policy and employs school staff. The school has a governing body.

Whilst many schools may set their own admissions policy the local authority is still responsible for coordinating admissions – that is, processing applications from families living in the area.

Schools in Bournemouth Christchurch and Poole

A list of mainstream schools (i.e. not special schools) is shown on the following page. This information is correct as of 1st September 2021. The total number of establishments was 91, comprising:

- 4 all through schools
- 1 middle (deemed secondary) school
- 66 primary schools (including infant and junior)
- 20 secondary schools

Of these there were:

- 56 academy converters
- 17 academy sponsor led
- 4 community schools
- 2 foundation schools
- 3 free schools
- 1 studio school
- 6 voluntary aided schools
- 1 voluntary controlled school

Establishment Name	Type of Establishment	Phase of Education	Statutory Low Age	Statutory High Age
Ad Astra Infant School	Academy converter	Primary	4	7
Avonbourne Boys' Academy	Academy converter	Secondary	11	16
Avonbourne Girls Academy	Academy converter	All-through	3	19
Avonwood Primary School	Academy converter	Primary	4	11
Baden-Powell and St Peter's Church of England Junior School	Academy converter	Primary	7	11
Bayside Academy	Academy sponsor led	Primary	4	11
Beardwood Primary and Nursery School	Academy converter	Primary	3	11
Bethany Church of England Junior School	Academy converter	Primary	7	11
Bishop Aldhelm's Church of England Primary School	Academy converter	Primary	3	11
Bournemouth School	Academy converter	Secondary	11	18
Bournemouth School for Girls	Academy converter	Secondary	11	18
Broadstone First School	Academy converter	Primary	5	9
Broadstone Middle School	Academy sponsor led	Middle deemed secondary	9	13
Burton Church of England Primary School	Voluntary controlled school	Primary	4	11
Canford Heath Infant School	Academy converter	Primary	4	7
Canford Heath Junior School	Academy converter	Primary	7	11
Christ The King Catholic Primary School	Academy converter	Primary	3	11
Christchurch Infant School	Community school	Primary	5	7
Christchurch Junior School	Academy converter	Primary	7	11
Corfe Hills School	Academy converter	Secondary	13	18
Corpus Christi Catholic Primary School	Voluntary aided school	Primary	4	11
Courthill Infant School	Academy converter	Primary	4	7
Elm Academy	Academy sponsor led	Primary	3	11
Glenmoor Academy	Academy sponsor led	Secondary	11	16
Hamworthy Park Junior School	Academy converter	Primary	7	11
Haymoor Junior School	Academy converter	Primary	7	11
Heatherlands Primary School	Academy converter	Primary	4	11
Heathlands Primary Academy	Academy converter	Primary	3	11
Highcliffe School	Academy converter	Secondary	11	19
Highcliffe St Mark Primary School	Foundation school	Primary	4	11
Hill View Primary School	Academy converter	Primary	4	11
Hillbourne Primary School	Community school	Primary	4	11
Jewell Academy Bournemouth	Academy sponsor led	Primary	4	11
King's Park Academy	Academy sponsor led	Primary	4	11
Kingsleigh Primary School	Academy converter	Primary	3	11
Kinson Academy	Academy converter	Primary	4	11
LeAF Studio	Studio schools	Secondary	13	19
Lilliput Church of England Infant School	Academy converter	Primary	4	7
Livingstone Academy Bournemouth	Free schools	All-through	4	19
Livingstone Road Infant School	Academy converter	Primary	4	7
Livingstone Road Junior School	Academy sponsor led	Primary	7	11
Longfleet Church of England Primary School	Academy converter	Primary	4	11
Magna Academy	Academy sponsor led	Secondary	11	18
Malmesbury Park Primary School	Academy converter	Primary	3	11
Menorside Academy	Academy sponsor led	Primary	4	11
Merley First School	Academy converter	Primary	5	9
Moordown St John's Church of England Primary School	Academy converter	Primary	4	11
Mudford Community Infants' School	Community school	Primary	4	7
Mudford Junior School	Community school	Primary	7	11
Muscliff Primary School	Academy converter	Primary	5	11
Oak Academy	Academy converter	Secondary	11	16
Oakdale Junior School	Academy converter	Primary	7	11
Ocean Academy Poole	Academy sponsor led	Primary	7	11
Old Town Infant School and Nursery	Academy converter	Primary	3	7
Parkfield School	Free schools	All-through	4	19
Parkstone Grammar School	Academy converter	Secondary	11	18
Pokesdown Community Primary School	Academy converter	Primary	4	11
Poole Grammar School	Academy converter	Secondary	11	18
Poole High School	Foundation school	Secondary	11	18
Queen's Park Academy	Academy sponsor led	Primary	7	11
Queen's Park Infant Academy	Academy converter	Primary	5	8
Somerford Primary School	Community school	Primary	4	11
Springdale First School	Academy converter	Primary	5	9
St Aldhelm's Academy	Academy sponsor led	Secondary	11	19
St Clement's and St John's Church of England Infant School	Academy converter	Primary	5	7
St Edward's Roman Catholic Church of England School, Poole	Voluntary aided school	Secondary	11	18
St James' Church of England Primary Academy	Academy converter	Primary	4	11
St Joseph's Catholic Primary School, Christchurch	Voluntary aided school	Primary	5	11
St Joseph's Catholic Primary School, Poole	Academy converter	Primary	4	11
St Katharine's Church of England Primary School	Voluntary aided school	Primary	4	11
St Luke's Church of England Primary School	Academy converter	Primary	4	11
St Mark's Church of England Primary School	Academy converter	Primary	4	11
St Mary's Catholic Primary School, Poole	Academy converter	Primary	4	11
St Michael's Church of England Primary School	Academy converter	Primary	3	11
St Peter's Catholic Comprehensive School	Academy converter	All-through	4	18
St Walburga's Catholic Primary School	Voluntary aided school	Primary	4	11
Stanley Green Infant Academy	Academy converter	Primary	2	7
Stourfield Infant School	Academy converter	Primary	5	7
Stourfield Junior School	Academy converter	Primary	7	11
Talbot Primary School	Academy converter	Primary	4	11
The Bishop of Winchester Academy	Academy sponsor led	Secondary	11	18
The Bourne Academy	Academy sponsor led	Secondary	11	18
The Cornerstone Academy	Academy sponsor led	Secondary	11	16
The Epiphany School	Academy converter	Primary	4	11
The Grange School	Academy sponsor led	Secondary	11	19
The Priory Church of England Primary School	Voluntary aided school	Primary	4	11
Twinn Sails Infant and Nursery School	Academy converter	Primary	3	7
Twynham Primary School	Free schools	Primary	3	11
Twynham School	Academy converter	Secondary	11	19
Winton Academy	Academy sponsor led	Secondary	11	16
Winton Primary School	Academy converter	Primary	4	11

Number of pupils

The number of children on roll at state-funded schools in BCP is counted in a termly census. In January 2021 the numbers were:

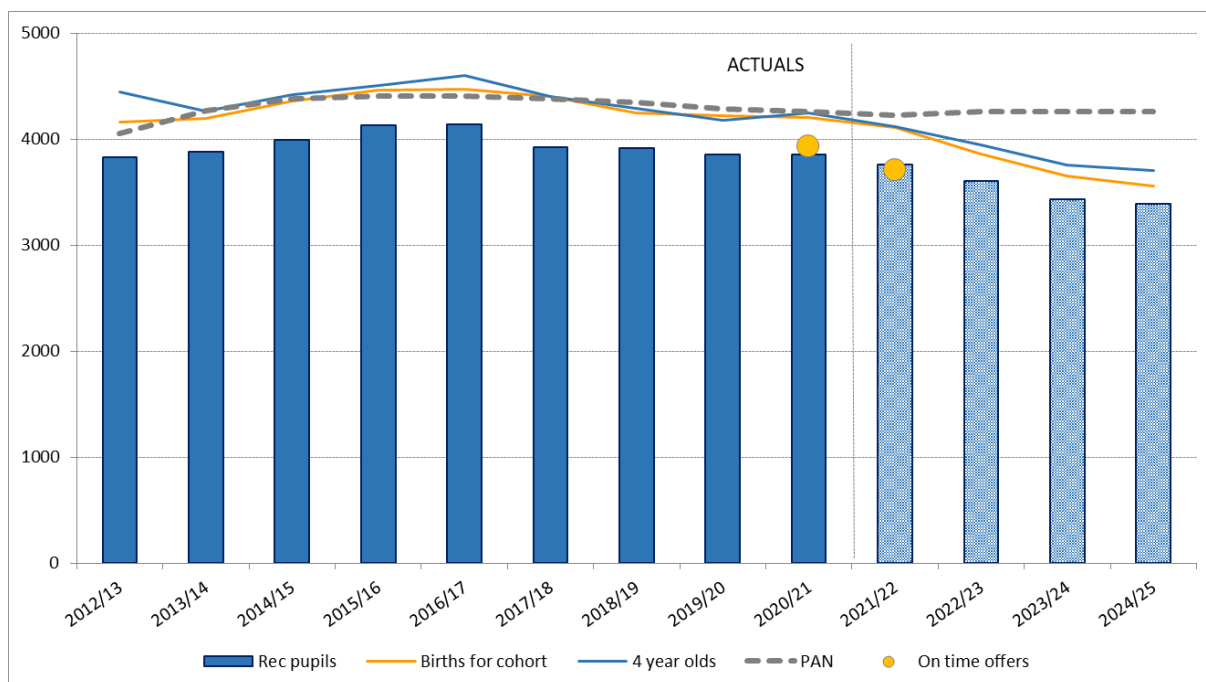
Primary (YR to Y6)	27,612
Secondary (Y7 to Y11)	19,148
Post 16 (Y12 and Y13)	3,660
Total	50,420

Forecast numbers of pupils

Every year councils are asked by the Department for Education to provide a forecast of future pupil numbers at a local authority and planning area level. A planning area is a geographical area

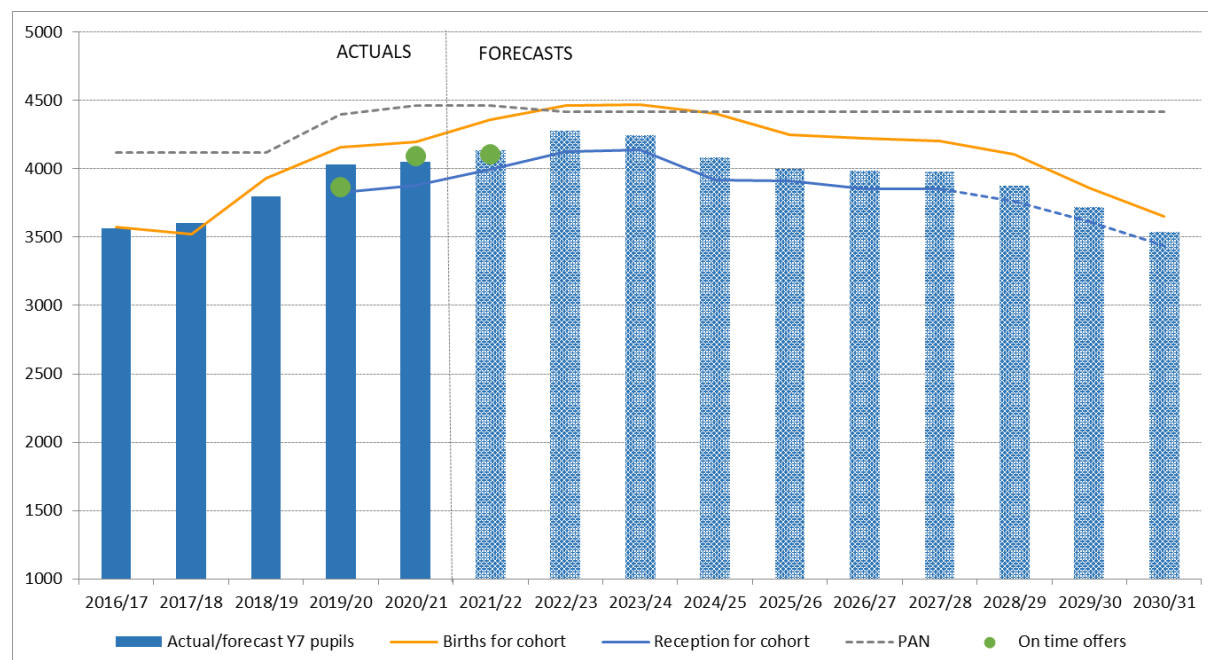
Forecasts are made using geo-coded NHS birth data and past trends in school admissions. The historic “survival” of children from one year group to the next is used to forecast numbers across all the year groups. Secondary forecasts take into account children who travel to BCP schools from neighbouring local authority districts. Future numbers attending schools is dependent on: a) underlying demography (how many children are there in the populations) and b) parental preference (which schools do parents tend to want their children to go to). The population tends to come in waves – with numbers rising and falling in response to the size of the parental age population. It is also affected by birth rates, and by housing growth. Parental preference is influenced by Ofsted reports, Department for Education performance data, word of mouth and personal experience. Over time the relative popularity of schools can rise and fall. It is not possible to forecast how parental preference will operate very far into the future.

At the primary age phase we expect to see numbers falling as a result of lower birth numbers in recent years. Smaller cohorts of women of childbearing age are the main underlying reason, but the effect of Covid-19 and changing patterns of international and internal migration may also have an impact.



The total number of children in Reception in BCP increased between 2012 and 2016 and has subsequently declined (solid blue bars). The total number of reception pupils is forecast to decline further in the coming years (hatched blue bars). The size of future reception cohorts is related to the number of births four years earlier (orange line). Because births have declined in the last four years we expect to see reception intakes also decline. This does not take account of the unknown effect of future housing development.

At the secondary age phase we expect to see numbers rising in the short term, as the bulge currently in primary school reaches secondary age. In addition to rising numbers of BCP resident secondary children, it should be noted that significant numbers of out-of-district children come into BCP to attend the grammar schools and other secondary schools in the area.



Year 7 cohorts have increased between 2016 and the present (solid blue bars) and are expected to continue to rise for the next two years. Numbers are then forecast to decline back to the 2016 level by 2030. Forecast numbers track the number of births eleven years previously reasonably closely (orange line). Because the rise and fall in pupil numbers will not affect all parts of BCP equally, there will be some areas where the bulge could adversely affect parental preference if mitigation is not put in place. In the longer term surplus places could be problematic in some areas.

Why plan school places?

Policies: [for discussion and agreement]

- BCP has a statutory duty to ensure all children resident in BCP are offered a school place if their parents want one.
- We aim to be able to offer a school place to BCP residents within 2 miles of their home for children under 8 (at Key Stage 1) or within 3 miles for children 8 and above (at Key Stage 2 and above).
- We aim to meet parental preference wherever possible. Parents can express a preference for three schools. In general if there are places available then a parent will be offered a place at their preference school. If there are more applications than places, then schools apply their published admissions criteria. Where we are unable to do so we will offer a place at the nearest available school in BCP.
- We will promote inclusion – enabling pupils with special educational needs and disabilities (SEND) to be educated in their local mainstream school wherever appropriate (as a preferred option). This includes making schools accessible, and providing resource bases to meet specific needs
- We aim to maintain a surplus of approximately 2% to enable parental preference and support the efficient use of resources. We recognise that some schools and planning areas may have a larger or smaller surplus because of local demography
- Where surplus places are forecast to fall below 2% for several years in a planning area, we will discuss with schools how additional places can be added. Usually this will be by expansion of individual schools. Where growth is very substantial and there is no viable option for expansion, we will consider proposing the establishment of a new school.
- Where surplus places are high and forecast to remain high within a planning area, thereby threatening the viability of a school we will discuss the removal or reuse of surplus accommodation. Where appropriate we may explore options such as the amalgamation of schools, or school closures in rare cases. It should be noted that all such changes require extensive consultation, and in many cases the support of academy boards, diocesan boards
- Where surplus places need to be removed we will explore alternatives for unused accommodation for educational purposes such as resource bases for children with SEND, or for early years provision, etc. in association with the reduction of a school's published admission number (PAN).
- We recognise the importance of preserving of school sites to enable future growth in the population. As a largely urban council area there are few potential sites for new schools.
- We do not have a fixed policy on optimum school size: we recognise that schools can and do operate successfully at a range of sizes. We do however regard a minimum published admissions number (PAN) of 30 (1 form of entry) as appropriate for primary schools. Thereafter it generally makes sense for PANs to be set at multiples of 30. We have no fixed policy on the maximum size of schools.
- The predominant model of school organisation in BCP is primary/secondary with pupils transferring at age 11. We support the continuation of that model. All through

schools can work successfully alongside the primary/secondary model, and we support this complementary approach.

- In north west Poole the first/middle/upper model is well established and is shared with the school system in the neighbouring part of Dorset. We support the continuation of this model in that planning area.
- We are committed to partnership working with academy boards and maintained school governing bodies when change is required. We encourage all schools and academies when considering changing any aspect of their organisation to think about the wider community of schools in their area, and in particular their role in providing inclusive learning opportunities for children with special educational needs living in their community.
- We recognise that BCP children may attend schools in another district – Dorset or Hampshire – and that children from other districts may attend schools in BCP. While BCP has a statutory duty to ensure all resident children are offered a school place, we will also have regard to parents’ right to express a preference for any school regardless of its location. We will work with our neighbouring authorities to ensure that the school system works effectively for all families and all schools.
- Section 106 of the Town and Country Planning Act 1990 (as amended) enables local authorities and housing developers to agree mitigation for the effect of new housing on the school system where necessary. When considering the need for mitigation we will consider the impact of new housing within the appropriate school planning areas and/or in schools within a two/three mile radius of the development (distance dependent on age of pupils). We expect that new housing development should not be to the detriment of existing schools or communities.
- Any change to school organisation will be subject to the relevant legislation, and guidance set out in the Department for Education Guidance, “Making significant changes (‘prescribed alterations’) to maintained schools Statutory guidance for proposers and decision-makers” (October 2018). Changes at academies have to be approved by the Secretary of State for Education, who will be advised by the Regional Schools Commissioner.

Primary planning areas

There are eleven primary planning areas. Primary planning areas are generally smaller than secondary planning areas because parents usually prefer their children to attend a more local school. There is no expectation that children should attend a school in the planning area where they live: it is simply a convenient planning tool to ensure there is an appropriate supply of places across the whole BCP area.

This section looks at each of the planning areas. For each area the following is presented:

- past data about numbers on roll
- forecasts of future numbers on roll
- a commentary about challenges ahead

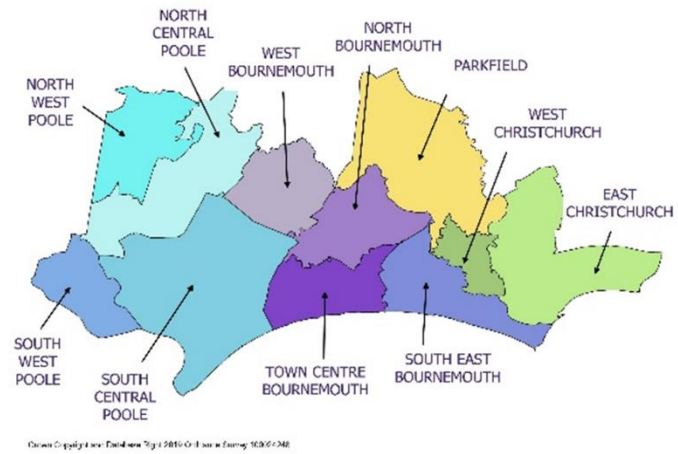
Forecasts are made annually. These take into account the number of births and admissions to Reception four years subsequently and the survival ratios from one age group to the next within the primary phase. NHS population data also informs the forecast.

The admissions process is driven by parental preference, as well as by demography (the underlying number of children). Over time, schools vary in popularity. If schools are oversubscribed and are unable to offer all applicants a place, then they applicants will be offered places at other schools. Predicting how this will affect numbers across planning areas involves considerable uncertainty.

Forecasts can be considered very accurate at BCP level, but less so at planning area level. Forecasts are not made at the level of individual schools. The purpose of forecasts is to enable strategic planning. If a large surplus or deficit of places is forecast then the council and schools can consider how best to respond. This strategy provides contextual information for such circumstances, but does not make detailed proposals for organisational change.

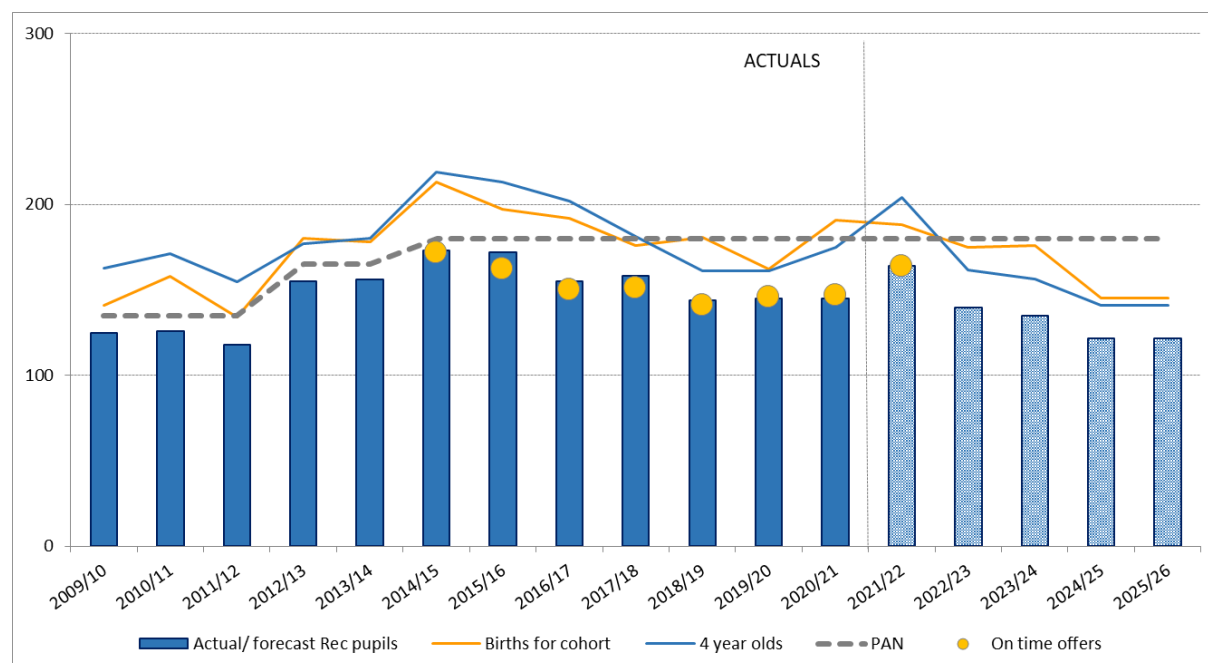
The big picture is that primary schools will see numbers fall over next few years as smaller cohorts reach school age. The smaller number of children is due to smaller numbers of women of childbearing age in the population and reduced birth rates. Despite this, some schools will experience pressure on places. There are large housing developments proposed in several parts of BCP. The effect of these is not built into the forecasts. Schools near such developments will see numbers increase.

There are some schools which are always strongly over-subscribed, and others at risk of under-subscription because of geographic factors and parental preference. Where substantial surplus capacity arises, we will work with schools to make alternative educational use of under-utilised space.



South West Poole

South West Poole is located south of Holes Bay. Its main residential areas include Hamworthy and Turlin Moor. To the west it borders Dorset. The planning area operates a two-tier primary/secondary system. The schools in the planning area are: Bayside Academy, Hamworthy Park Junior School, and Twin Sails Infant and Nursery School.



Past and forecast numbers for South West Poole primary planning area

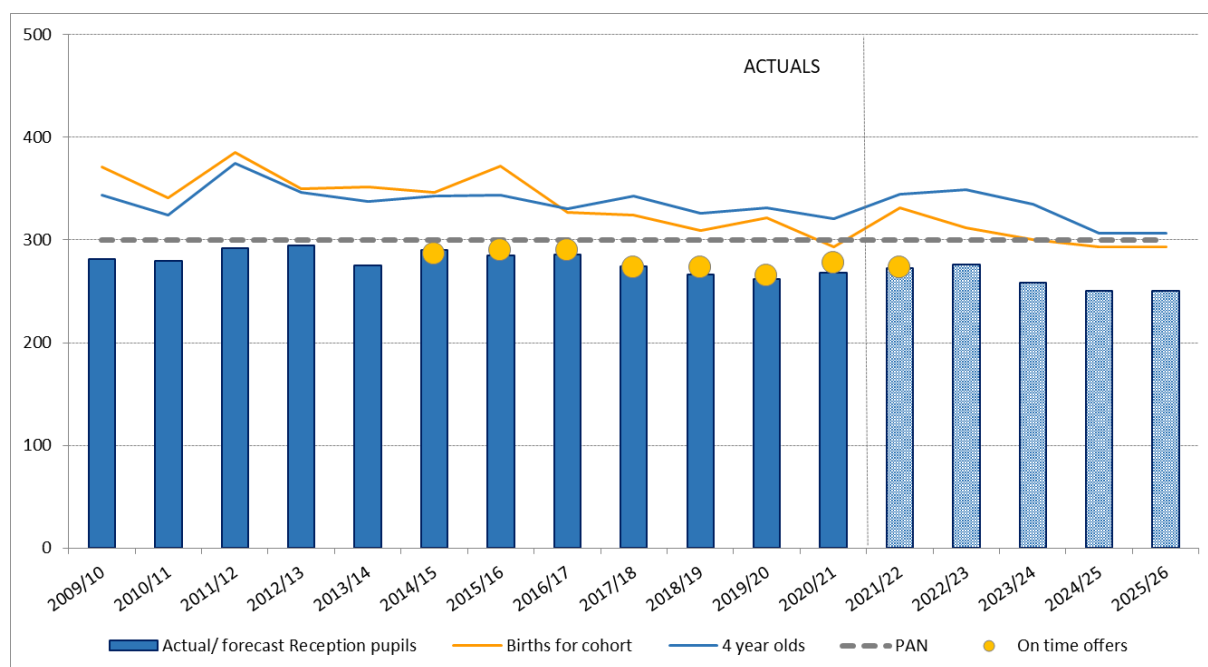
The chart shows that pupil numbers in South West Poole fell from a peak in 2014 but have increased slightly in recent years (solid blue bars). The ratio between numbers born four years previously (orange line) and four-year-olds for the same cohort (blue line) has been relatively stable. The number of on-time application offers of places (yellow dot) has been a good predictor of the number of children subsequently on roll in Year R. Numbers are forecast to increase in 2021 before falling for the remainder of the forecast period. The small size of the planning area makes any forecast subject to considerable uncertainty. Future housing developments could lead to high numbers.

Schools in this planning area might consider using surplus space for alternative educational purposes, such as resource bases for children with special educational needs and disabilities.

	2014/15	2015/16	2016/17	2017/18	2018/19	2019/20	2020/21	2021/22	2022/23	2023/24	2024/25	2025/26
Reception (4+)	173	172	155	158	144	145	145	164	139	135	122	122
Year 1 (5+)	158	174	167	152	162	138	139	141	160	136	132	119
Year 2 (6+)	158	161	168	173	150	163	142	141	143	162	138	133
Year 3 (7+)	124	148	160	177	168	151	165	143	142	144	163	139
Year 4 (8+)	130	129	140	159	171	164	154	163	141	140	142	161
Year 5 (9+)	123	130	127	143	156	175	166	155	165	143	141	144
Year 6 (10+)	129	121	121	127	144	149	171	162	152	161	139	138
Total Rec to Year 6	995	1,035	1,038	1,089	1,095	1,085	1,082	1,070	1,042	1,020	977	955

North Central Poole

North Central Poole is located in urban central Poole and includes some heathland to the north. Its main residential areas include Bearwood and Canford Heath. To the north it borders North West Poole (which operates a three-tier system), to the south is South Central Poole and to the east is West Bournemouth. The planning area operates a two-tier primary/secondary system. The schools in the planning area are: Ad Astra Infant School, Bearwood Primary and Nursery School, Canford Heath Infant School, Canford Heath Junior School, Haymoor Junior School, and Hillbourne Primary School.



Past and forecast numbers for North Central Poole primary planning area

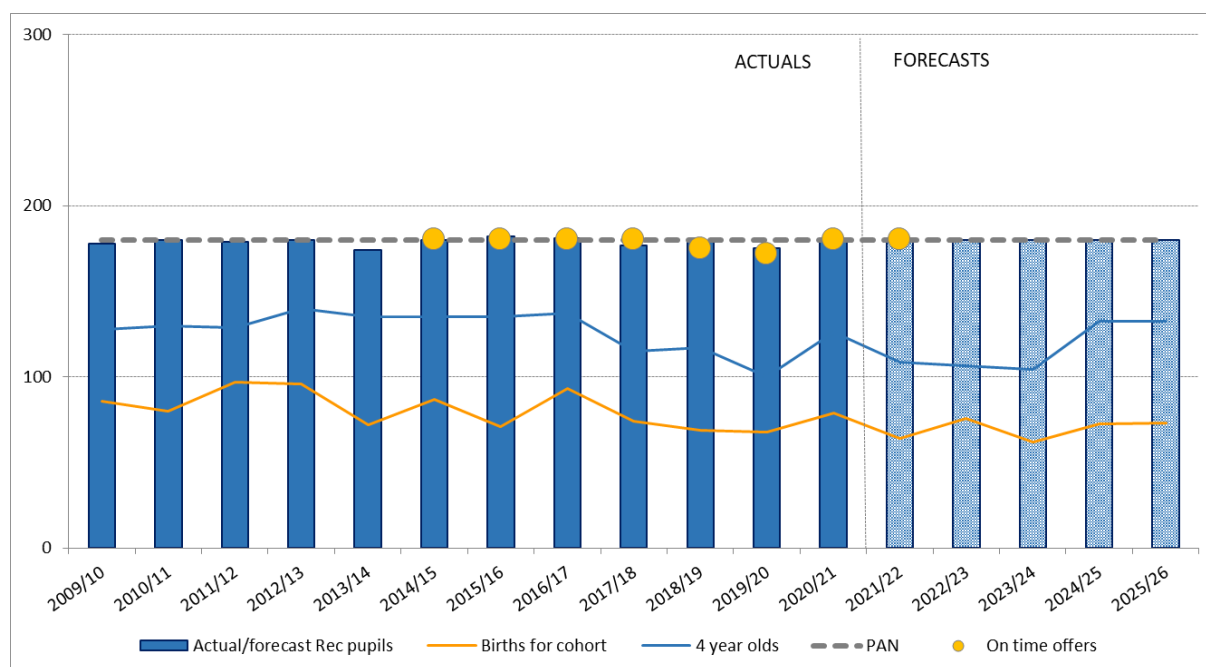
The chart shows that pupil numbers in North Central Poole fell slightly from a peak in 2014 but have increased slightly in recent years (solid blue bars). The ratio between numbers born four years previously (orange line) and four-year-olds for the same cohort (blue line) has been relatively stable. The number of on-time application offers of places (yellow dot) has been a good predictor of the number of children subsequently on roll in Year R. Numbers are forecast to remain similar in 2021 and 2022 before falling slightly for the remainder of the forecast period. Future housing developments could lead to high numbers. A large development is planned at Bearwood, and another development is planned next to the Hillbourne site. Hillbourne has been recently rebuilt and the effect of this on future recruitment has yet to be fully observed.

There may be some opportunity to use surplus space for alternative educational purposes, such as resource bases for children with special educational needs and disabilities; however the forecast surplus is not substantial.

	2014/15	2015/16	2016/17	2017/18	2018/19	2019/20	2020/21	2021/22	2022/23	2023/24	2024/25	2025/26
Reception (4+)	290	285	286	274	266	262	268	273	276	259	251	251
Year 1 (5+)	274	298	290	286	275	259	264	267	272	276	258	250
Year 2 (6+)	296	274	284	291	285	270	261	263	266	271	274	257
Year 3 (7+)	287	291	274	291	283	283	267	259	260	264	269	272
Year 4 (8+)	290	288	289	271	292	276	283	265	257	258	262	267
Year 5 (9+)	253	282	284	271	262	280	272	274	257	249	250	253
Year 6 (10+)	264	252	281	274	272	262	281	271	273	256	248	249
Total Rec to Year 6	1,954	1,970	1,988	1,958	1,935	1,892	1,896	1,872	1,862	1,832	1,811	1,798

North West Poole

North West Poole is located in semi-rural north Poole and includes heathland surrounding small villages. Its main residential areas are Merley and Canford Heath. The planning area operates a three-tier first/middle/upper system – the only part of BCP to do so. To the north it borders Wimborne Minster in Dorset (which also operates a three-tier system), to the south and south east is heathland and the north central Poole planning area. The schools in the planning area are: Broadstone First School, Broadstone Middle School, Merley First School and Springdale First School.



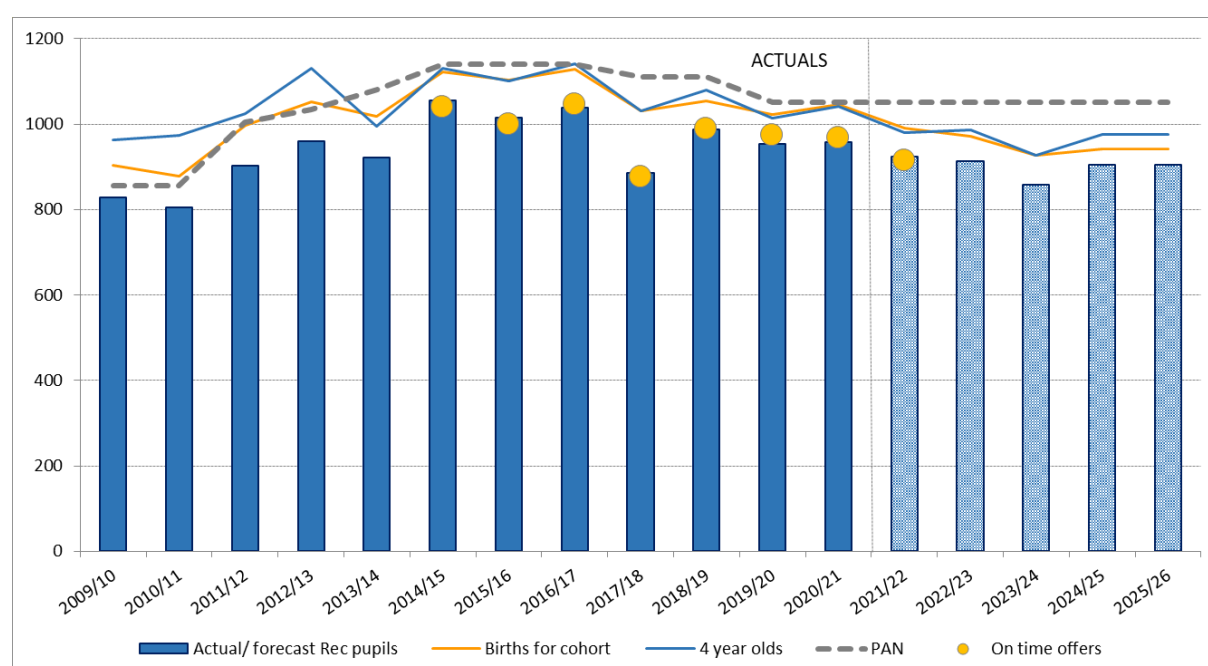
Past and forecast numbers for North West Poole primary planning area

The chart shows that YR pupil numbers (solid blue bars) in North West Poole have remained at or close to the area's aggregate admission number since at least 2009. This is because the schools all tend to be fully subscribed. The ratio between numbers born four years previously (orange line) and four-year-olds for the same cohort (blue line) has been relatively stable, with four-year-old numbers showing an increase on birth numbers because of net inward migration. The number of on-time application offers of places (yellow dot) has been a good predictor of the number of children subsequently on roll in Year R. Numbers are forecast to remain close to PAN in the future. Future housing developments could lead to even higher demand. A large development is planned north of Merley, and other developments may be brought forward. If such developments are approved BCP Council believes that additional primary capacity will need to be added.

	2014/15	2015/16	2016/17	2017/18	2018/19	2019/20	2020/21	2021/22	2022/23	2023/24	2024/25	2025/26
Reception (4+)	180	182	181	177	179	175	180	180	180	180	180	180
Year 1 (5+)	175	176	178	181	176	180	179	181	181	181	181	181
Year 2 (6+)	180	180	181	181	179	181	179	180	183	183	183	183
Year 3 (7+)	179	181	179	181	184	184	181	181	182	184	184	184
Year 4 (8+)	183	180	188	179	179	181	184	180	180	182	184	184
Year 5 (9+)	144	134	128	135	131	140	135	137	135	135	136	137
Year 6 (10+)	153	141	137	133	140	142	152	144	146	143	143	144
Total Rec to Year 6	1,194	1,174	1,172	1,167	1,168	1,183	1,190	1,184	1,187	1,188	1,191	1,193

South Central Poole

South Central Poole is a large planning area located in the southern part of urban Poole and includes the town centre, the old town, Parkstone and Canford Cliffs. To the north it borders north central Poole, to the east is Bournemouth, to the south Poole Bay and Poole Harbour. The planning area operates a two-tier primary/secondary system. The schools in the planning area are: Baden-Powell and St Peter's Church of England Junior School, Bishop Aldhelm's Church of England Primary School, Courthill Infant School, Heatherlands Primary School, Lilliput Church of England Infant School, Livingstone Road Infant School, Livingstone Road Junior School, Longfleet Church of England Primary School, Manorside Academy, Oakdale Junior School, Ocean Academy Poole, Old Town Infant School and Nursery, St Joseph's Catholic Primary School Poole, St Mary's Catholic Primary School Poole, Stanley Green Infant Academy, and Talbot Primary School.



Past and forecast numbers for South Central Poole primary planning area

The chart shows that Y7 pupil numbers in south central Poole have been surprisingly volatile in recent years (solid blue bars). In contrast, the ratio between numbers born four years previously (orange line) and four-year-olds for the same cohort (blue line) has been very stable. The number of on-time application offers of places (yellow dot) has been a good predictor of the number of children subsequently on roll in Year R. Numbers are forecast to decline slightly to 2023 before rising. Future housing developments could lead to higher numbers.

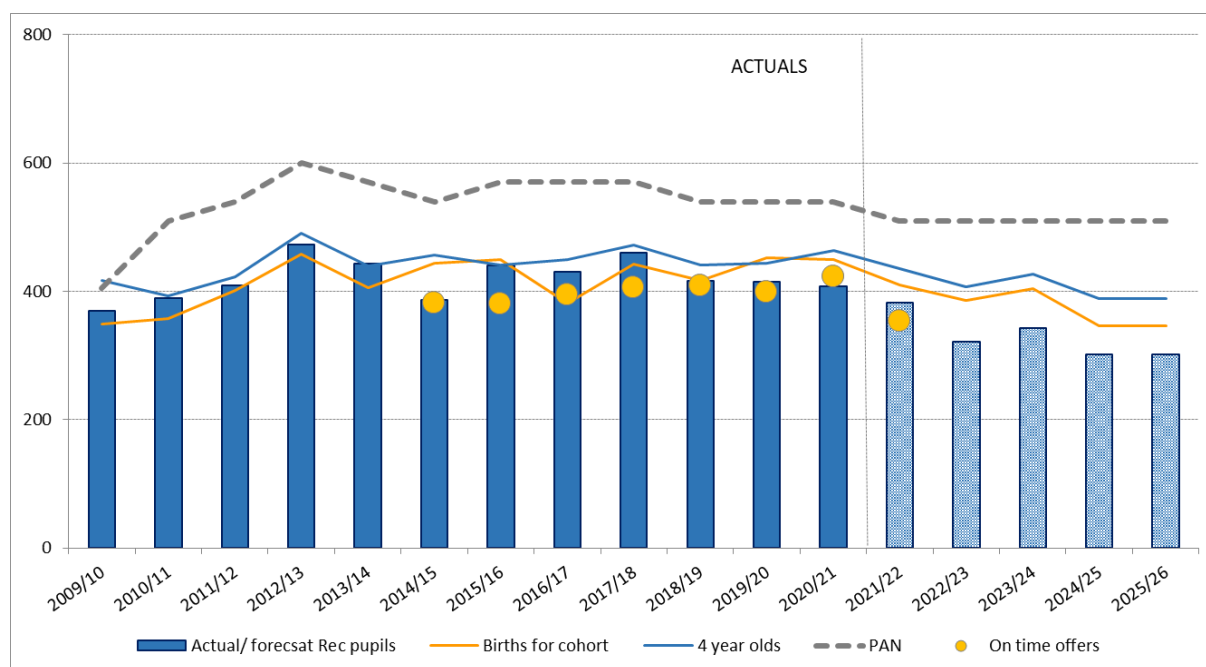
It is noteworthy that total numbers of primary children in south central Poole have increased very substantially in recent years - from 6,126 in 2014 to 6,688 in 2020.

There may be an opportunity to use surplus space for alternative educational purposes, such as resource bases for children with special educational needs and disabilities.

	2014/15	2015/16	2016/17	2017/18	2018/19	2019/20	2020/21	2021/22	2022/23	2023/24	2024/25	2025/26
Reception (4+)	1,055	1,014	1,039	885	988	953	957	924	913	857	904	904
Year 1 (5+)	924	1,069	1,016	1,042	873	977	960	954	921	911	855	901
Year 2 (6+)	926	920	1,049	1,011	1,053	880	971	960	955	922	911	855
Year 3 (7+)	877	913	900	990	978	1,027	859	942	931	926	894	884
Year 4 (8+)	798	866	927	898	989	982	1,003	854	936	926	920	889
Year 5 (9+)	793	798	861	922	881	973	976	992	844	926	915	910
Year 6 (10+)	753	783	790	857	921	886	962	972	988	841	922	912
Total Rec to Year 6	6,126	6,363	6,582	6,605	6,683	6,678	6,688	6,598	6,489	6,308	6,321	6,254

West Bournemouth

West Bournemouth is located in the north west area of Bournemouth. Its main residential areas include Kinson and Northbourne. To the north it borders Ferndown in Dorset. To the West it borders North and South Central Poole, and to the south east it borders north Bournemouth. The planning area operates a two-tier primary/secondary system. The schools in the planning area are: Christ the King Catholic Primary School, Elm Academy, Heathlands Primary Academy, Hill View Primary School, Kingsleigh Primary School, Kinson Academy, and St Marks Church of England Primary School.



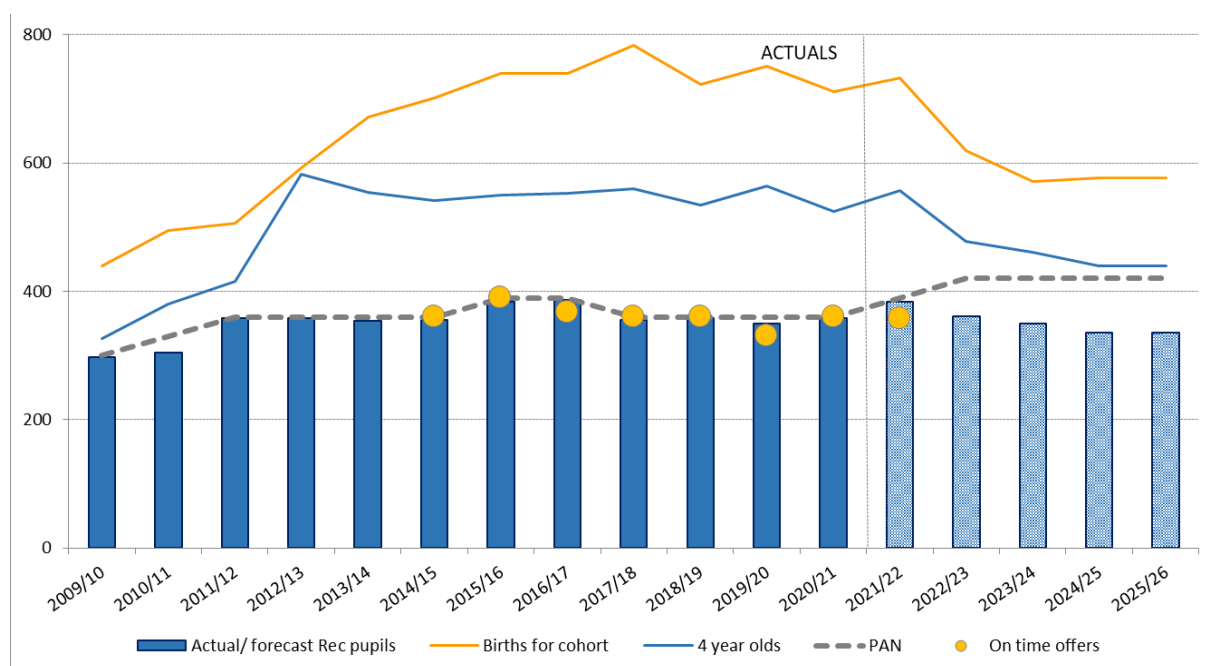
Past and forecast YR numbers for West Bournemouth primary planning area

The chart shows that Y7 pupil numbers in West Bournemouth have been somewhat volatile in recent years (solid blue bars). The ratio between numbers born four years previously (orange line) and four-year-olds for the same cohort (blue line) has been relatively stable. The number of on-time application offers of places (yellow dot) has been a reasonably good predictor of the number of children subsequently on roll in Year R, although in some years more children have been admitted to schools in the area than initially expected. Numbers are forecast to drop in future years. The gap between forecast numbers and the aggregate published admission number for the area is forecast to be substantial. This is likely to present problems for some schools. Schools and BCP will need to work together to decide how best to address this problem. There may be an opportunity to use surplus space for alternative educational purposes, such as resource bases for children with special educational needs and disabilities. The risk for individual schools is that they will have lower income as a result of falling numbers on roll, but still have the same overheads for their premises.

	2014/15	2015/16	2016/17	2017/18	2018/19	2019/20	2020/21	2021/22	2022/23	2023/24	2024/25	2025/26
Reception (4+)	387	440	431	460	417	415	408	382	321	343	302	302
Year 1 (5+)	435	381	450	444	476	414	415	412	386	324	347	305
Year 2 (6+)	436	439	392	461	434	472	404	411	408	382	321	343
Year 3 (7+)	384	426	449	399	458	417	459	397	404	401	376	316
Year 4 (8+)	380	388	424	451	396	447	411	453	392	399	396	371
Year 5 (9+)	378	375	387	420	453	396	438	408	450	389	396	394
Year 6 (10+)	337	374	374	389	419	451	389	435	405	447	387	393
Total Rec to Year 6	2,737	2,823	2,907	3,024	3,053	3,012	2,924	2,898	2,766	2,686	2,524	2,423

Town Centre Bournemouth

Town Centre Bournemouth is located on Bournemouth seafront. Its main residential areas include Westbourne and Boscombe as well as the town centre. To the north it borders North Bournemouth. To the West it borders Poole, and to the east it borders south east Bournemouth. The planning area operates a two-tier primary/secondary system. The schools in the planning area are: Bethany Church of England Junior School, Kings's Park Academy, Livingstone Academy Bournemouth (opened September 2021), Malmesbury Park Primary School, St Clement's and St John's Church of England Infant School, and St Michael's Church of England Primary School.



Past and forecast YR numbers for Town Centre Bournemouth primary planning area

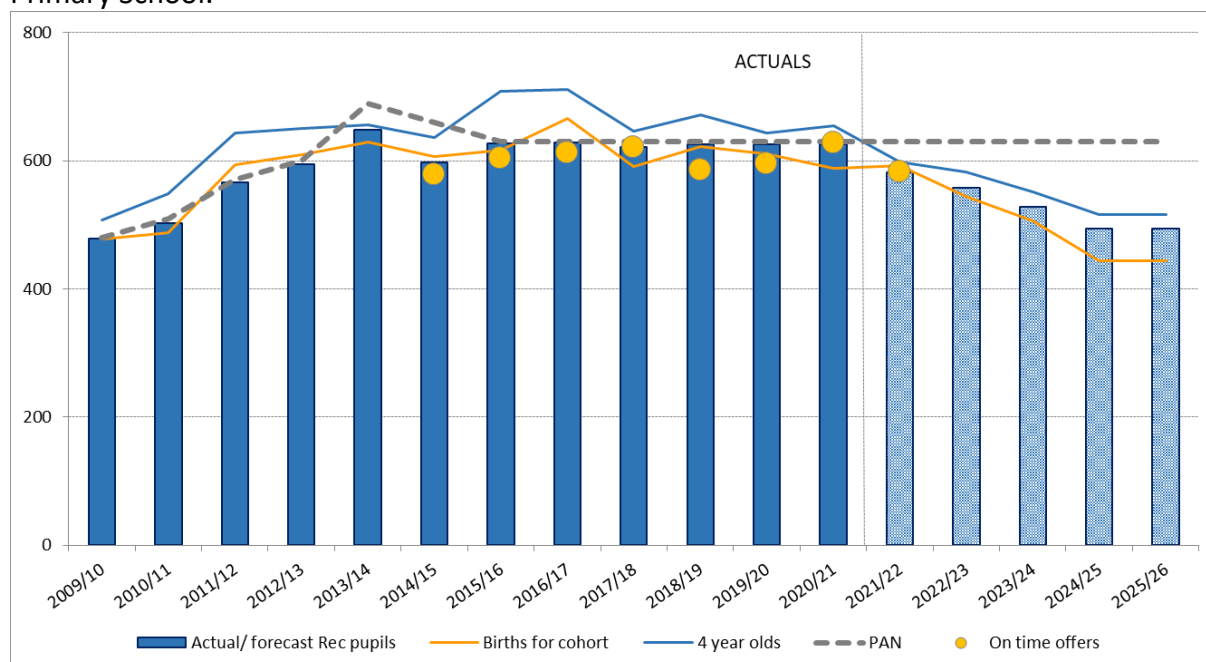
The chart shows that reception pupil numbers in Town Centre Bournemouth have been fairly stable in recent years (solid blue bars). The ratio between numbers born four years previously (orange line) and four-year-olds for the same cohort (blue line) has undergone significant change, but has been stable in the most recent period. The gap between births, and the subsequent number of four-year-olds in the same cohort suggests outward migration from the planning area. In many cases this will be to nearby more suburban areas. The number of on-time application offers of places (yellow dot) has been a good predictor of the number of children subsequently on roll in Year R. Numbers are forecast to drop in future years. The forecast does not include the effect of housing growth. The planning area includes the Towns Fund regeneration project in Boscombe. Not only will this create new homes in the area, it is likely to change the character of the area, potentially making it more attractive for families. There may be other changes to household types in the area in response to changes in the economy. All this means there is considerable uncertainty in forecasting school places. There is very little opportunity for school expansion in the area, because of the density of development. There may be an opportunity to use surplus space for alternative educational purposes, such as resource bases for children with special educational needs and disabilities.

However, numbers have grown in the past and although they are forecast to fall after 2023, the decline is not as great as in some other areas.

	2014/15	2015/16	2016/17	2017/18	2018/19	2019/20	2020/21	2021/22	2022/23	2023/24	2024/25	2025/26
Reception (4+)	356	384	387	356	359	350	359	383	361	350	336	336
Year 1 (5+)	352	357	382	384	359	358	352	360	384	361	350	336
Year 2 (6+)	353	353	352	384	383	359	346	348	355	379	357	346
Year 3 (7+)	333	355	352	353	390	376	363	347	349	356	380	358
Year 4 (8+)	311	331	356	342	348	388	379	361	345	347	354	378
Year 5 (9+)	272	316	339	360	350	345	379	378	360	344	346	353
Year 6 (10+)	273	279	327	340	357	354	345	381	380	362	346	347
Total Rec to Year 6	2,250	2,375	2,495	2,519	2,546	2,530	2,523	2,557	2,533	2,499	2,469	2,455

North Bournemouth

North Bournemouth is located to the north of the town centre. Its main residential areas include Charminster and Winton. To the north it borders the sparsely populated Parkfield planning area around the airport. To the west it borders West Bournemouth, to the east it borders Christchurch. The planning area operates a two-tier primary/secondary system. The schools in the planning area are: Jewell Academy, Moordown St John's Church of England Primary School, Muscliff Primary School, Queen's Park Academy, St Luke's Church of England Primary School, St Walburga's Catholic Primary School, The Epiphany School, and Winton Primary School.



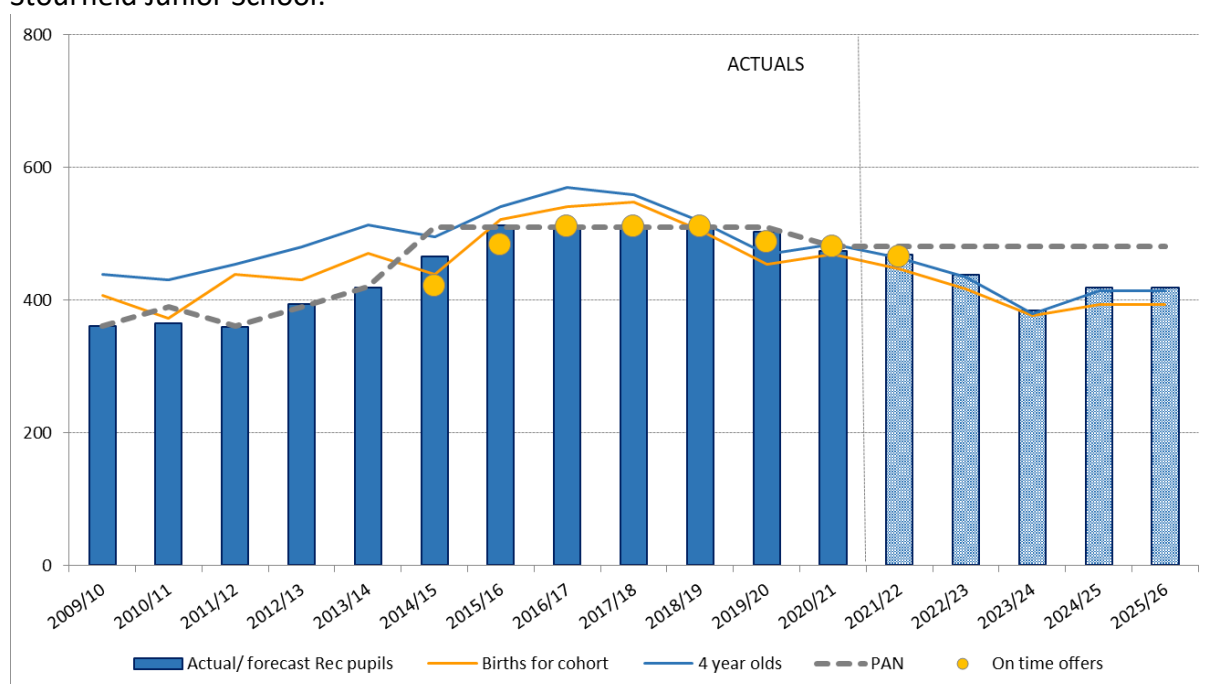
Past and forecast YR numbers for North Bournemouth primary planning area

The chart shows that reception pupil numbers in North Bournemouth grew strongly between 2009 and 2013 (solid blue bars). Although at a somewhat lower level since then, there has been very little surplus capacity at planning area level. The ratio between numbers born four years previously (orange line) and four-year-olds for the same cohort (blue line) has been stable, but there are indications it may change in the future. The number of on-time application offers of places (yellow dot) has been a good predictor of the number of children subsequently on roll in Year R. Total numbers are forecast to drop in future years. The forecast does not include the effect of housing growth. There may be an opportunity to use surplus space for alternative educational purposes, such as resource bases for children with special educational needs and disabilities.

	2014/15	2015/16	2016/17	2017/18	2018/19	2019/20	2020/21	2021/22	2022/23	2023/24	2024/25	2025/26
Reception (4+)	598	627	629	622	626	625	626	582	557	529	494	494
Year 1 (5+)	667	613	628	628	626	627	626	627	583	559	530	495
Year 2 (6+)	641	677	624	627	625	627	625	626	627	583	558	529
Year 3 (7+)	561	655	679	620	625	629	624	624	625	626	582	558
Year 4 (8+)	500	562	654	679	607	628	632	623	623	624	625	581
Year 5 (9+)	503	505	550	661	681	621	630	637	628	628	629	630
Year 6 (10+)	454	499	507	550	664	675	615	627	634	625	625	626
Total Rec to Year 6	3,924	4,138	4,271	4,387	4,454	4,432	4,378	4,346	4,278	4,174	4,044	3,913

South East Bournemouth

South East Bournemouth is located to the east of the town centre to Hengistbury Head. Its main residential area is Southbourne. To the north it borders the sparsely populated Parkfield planning area around the airport. To the west it borders West Bournemouth, to the north and east it borders Christchurch, although separated by the Rive Stour and Christchurch Harbour. The planning area operates a two-tier primary/secondary system. The schools in the planning area are: Avonwood, Corpus Christi Catholic Primary School, Pokesdown Community Primary School, St James' Church of England Primary Academy, St Katharine's Church of England Primary School, St Peter's Catholic Comprehensive School, Stourfield Infant School, and Stourfield Junior School.



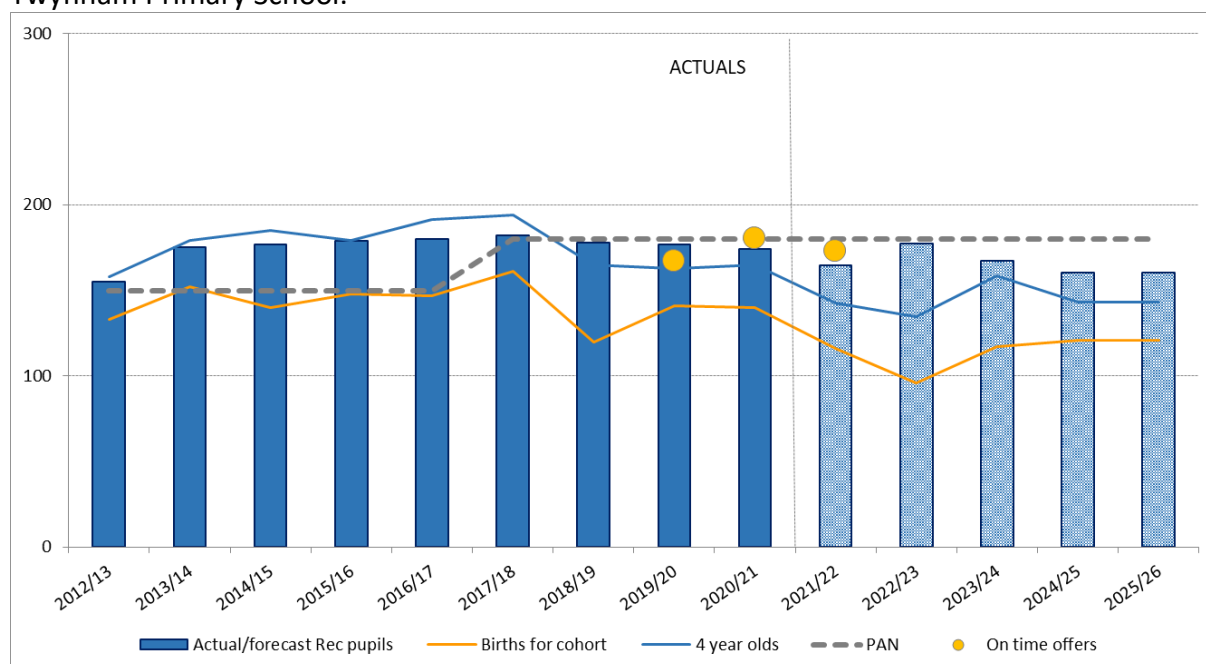
Past and forecast YR numbers for South East Bournemouth primary planning area

The chart shows that reception pupil numbers in South East Bournemouth grew strongly between 2009 and 2015 (solid blue bars) and have remained at that level ever since. The ratio between numbers born four years previously (orange line) and four-year-olds for the same cohort (blue line) has been stable: it appears there is net inward migration of young children to the area from other parts of BCP and beyond. The number of on-time application offers of places (yellow dot) has been a good predictor of the number of children subsequently on roll in Year R. Total numbers are forecast to drop in future years. This largely reflects the drop in numbers of births. In practice strong parental preference may maintain schools at their current level, with the surplus being displaced to other areas. The forecast does not include the effect of housing growth. There may be an opportunity to use surplus space for alternative educational purposes, such as resource bases for children with special educational needs and disabilities; however such space may be hard to come by. South East Bournemouth and neighbouring West Christchurch have both had strong pupil numbers in the recent past and may continue to recruit strongly.

	2014/15	2015/16	2016/17	2017/18	2018/19	2019/20	2020/21	2021/22	2022/23	2023/24	2024/25	2025/26
Reception (4+)	465	512	510	510	508	503	473	468	438	383	418	418
Year 1 (5+)	422	472	508	510	507	503	500	470	465	435	381	416
Year 2 (6+)	392	416	486	507	505	509	504	501	471	466	436	381
Year 3 (7+)	365	396	413	487	517	514	515	510	507	477	472	441
Year 4 (8+)	369	368	398	417	506	518	514	520	515	512	481	476
Year 5 (9+)	389	367	365	395	408	506	512	509	515	510	507	477
Year 6 (10+)	353	383	362	364	392	403	514	512	509	515	510	507
Total Rec to Year 6	2,755	2,914	3,042	3,190	3,343	3,456	3,532	3,490	3,420	3,298	3,205	3,116

West Christchurch

West Christchurch between the Rivers Stour and Avon. Its main residential area is the town centre north west of the Priory. To the north it borders the sparsely populated Parkfield planning area around the airport. To the west it borders south east Bournemouth, to the east it borders east Christchurch, separated by the River Avon. The planning area operates a two-tier primary/secondary system. The schools in the planning area are: Christchurch Infant School, Christchurch Junior School, The Priory Church of England Primary School, and Twynham Primary School.



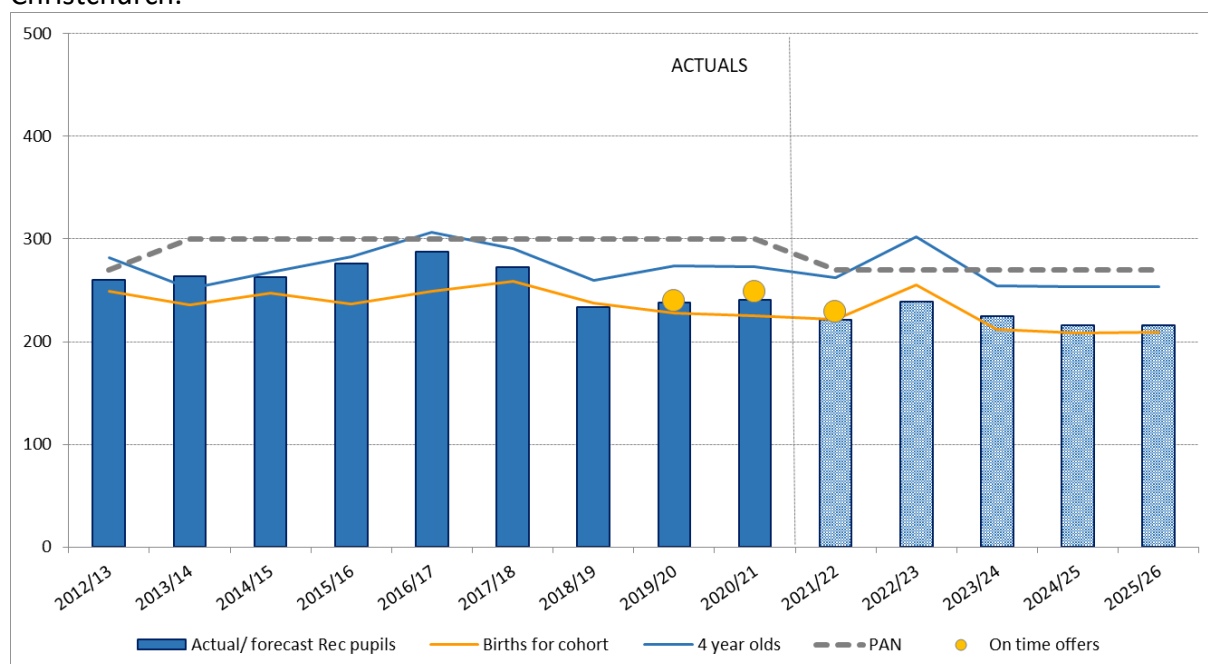
Past and forecast YR numbers for West Christchurch primary planning area

The chart shows that reception pupil numbers in West Christchurch grew between 2012 and 2013 (solid blue bars) and have remained at that level ever since. The ratio between numbers born four years previously (orange line) and four-year-olds for the same cohort (blue line) has been stable: it appears there is net inward migration of young children to the area from other parts of BCP and beyond. The number of on-time application offers of places (yellow dot) has been a good predictor of the number of children subsequently on roll in Year R. Total numbers are forecast to drop in future years. This largely reflects the drop in numbers of births. In practice strong parental preference may maintain schools at their current level, with the surplus being displaced to other areas. The forecast does not include the effect of housing growth. There may be an opportunity to use surplus space for alternative educational purposes, such as resource bases for children with special educational needs and disabilities, however such space may be hard to come by. West Christchurch and South East Bournemouth have both had strong pupil numbers in the recent past and may continue to recruit strongly.

	2014/15	2015/16	2016/17	2017/18	2018/19	2019/20	2020/21	2021/22	2022/23	2023/24	2024/25	2025/26
Reception (4+)	177	179	180	182	178	177	174	164	178	167	160	160
Year 1 (5+)	178	178	180	180	180	179	175	173	164	177	166	160
Year 2 (6+)	156	177	180	180	180	180	178	175	173	164	177	166
Year 3 (7+)	162	161	178	187	182	187	187	184	180	178	169	182
Year 4 (8+)	161	160	161	184	187	183	185	187	184	181	179	169
Year 5 (9+)	162	163	159	160	185	188	185	186	188	185	182	180
Year 6 (10+)	160	161	163	159	159	188	188	186	186	189	185	182
Total Rec to Year 6	1,156	1,179	1,201	1,232	1,251	1,282	1,272	1,255	1,253	1,240	1,218	1,199

East Christchurch

East Christchurch is located east of the River Avon. Its main residential areas are Burton, Mudeford, Somerford and Highcliffe. To the north and east it borders the New Forest in Hampshire. To the west it borders west Christchurch. The planning area operates a two-tier primary/secondary system. The schools in the planning area are: Burton Church of England Primary School, Highcliffe St Mark's Primary School, Mudeford Community Infants' School, Mudeford Junior School, Somerford Primary School, and St Joseph's Catholic Primary School Christchurch.



Past and forecast YR numbers for East Christchurch primary planning area

The chart shows that reception pupil numbers in East Christchurch grew between 2012 and 2016 (solid blue bars) and have then fell back a little. The ratio between numbers born four years previously (orange line) and four-year-olds for the same cohort (blue line) has been stable: it appears there is net inward migration of young children to the area from other parts of BCP and beyond. The number of on-time application offers of places (yellow dot) has been a good predictor of the number of children subsequently on roll in Year R. Total numbers are forecast to drop in future years. This largely reflects the drop in numbers of births. The scale of the forecast drop in pupil numbers could present problems if it is not carefully managed. The area is strongly affected by the position in New Forest, which creates additional uncertainty. The forecast does not include the effect of housing growth. At least one major housing development is proposed for the area. If this begins to be delivered then the decline in numbers may be less than forecast. There may be an opportunity to use surplus space for alternative educational purposes, such as resource bases for children with special educational needs and disabilities.

	2014/15	2015/16	2016/17	2017/18	2018/19	2019/20	2020/21	2021/22	2022/23	2023/24	2024/25	2025/26
Reception (4+)	263	276	288	273	234	238	241	222	239	225	216	216
Year 1 (5+)	262	267	276	289	280	248	246	249	229	247	232	223
Year 2 (6+)	273	272	268	282	287	288	255	251	254	233	252	237
Year 3 (7+)	284	272	272	269	290	293	292	259	255	258	237	256
Year 4 (8+)	242	279	274	274	268	301	289	294	261	256	259	238
Year 5 (9+)	268	246	280	277	273	270	302	290	295	262	257	260
Year 6 (10+)	288	272	250	281	274	280	271	304	292	297	264	259
Total Rec to Year 6	1,880	1,884	1,908	1,945	1,906	1,918	1,896	1,868	1,825	1,778	1,718	1,690

Parkfield

Parkfield is a planning area which covers a large geographical area including Bournemouth Airport. It is sparsely populated. The only school in the area draws its pupils from well beyond the immediate locality – across the whole of BCP and from neighbouring local authority areas. It offers a Montessori approach to education, and recruitment is mainly driven by parental preference for the specific ethos of the school. A forecast is likely to be misleading, as the methodology relies heavily on a reasonably long time series of data, which does not exist, and on geography, which is a less important factor for recruitment to Parkfield. In practice numbers are likely to remain at or above current levels assuming parents continue to seek the type of education offered.

Secondary planning areas

There are five secondary planning areas. Bournemouth and Christchurch are broadly defined by the borders of the former council areas. Central Poole comprises most of the former Borough of Poole.

The two other planning areas have unique circumstances.

- North West Poole has a three-tier (first/middle/upper) system unlike the rest of BCP. This means that transfer ages are different.
- Parkfield is the area around Bournemouth Airport. It is a big area with a very small population and just one school.

There is no expectation that children should attend a school in the planning area where they live: it is simply a convenient planning tool.

This section looks at each of the planning areas. For each area the following is presented:

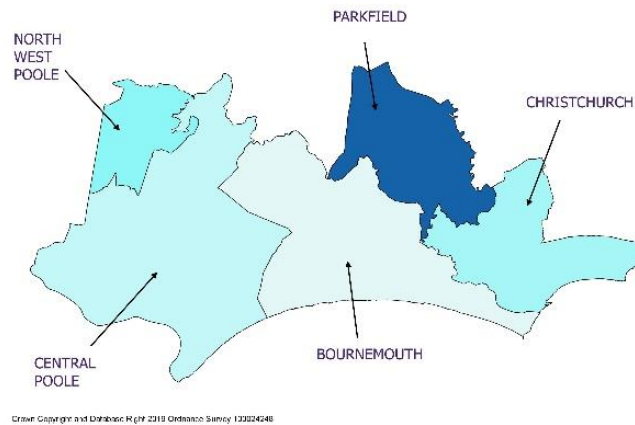
- past data about numbers on roll
- forecasts of future numbers on roll
- a commentary about challenges ahead

Forecasts are made annually. These take into account the proportion of Y6 children in primary school transferring to Y7 in secondary school, and the survival ratios from one age group to the next within the secondary phase. The ratio of children born eleven years previously to children admitted to Y7 at age 11 can also be a good predictor of future numbers.

The admissions process is driven by parental preference, as well as by demography (the underlying number of children). Over time, schools vary in popularity. If schools are oversubscribed and are unable to offer all applicants a place, then they applicants will be offered places at other schools. Predicting how this will affect numbers across planning areas involves considerable uncertainty.

Forecasts can be considered very accurate at BCP level, but less so at planning area level. Forecasts are not made at the level of individual schools. The purpose of forecasts is to enable strategic planning. If a large surplus or deficit of places is forecasted, then the council and schools can consider how best to respond. This strategy provides contextual information for planning does not make detailed proposals for organisational change.

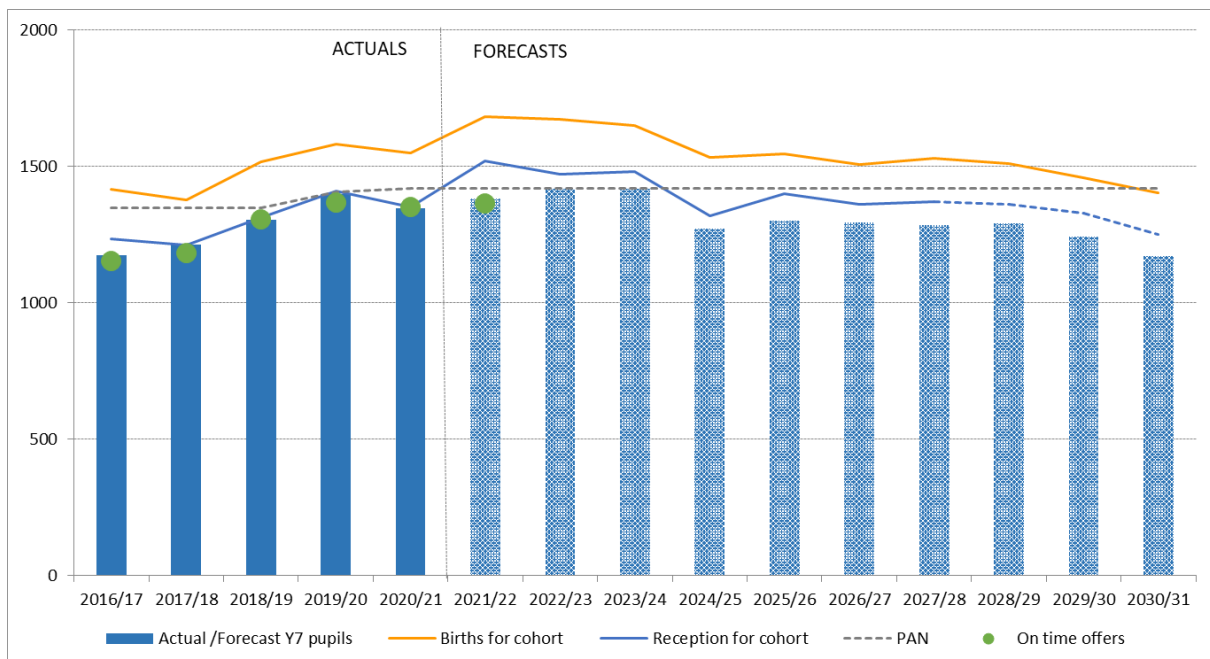
The big picture is that secondary schools will come under pressure in the next few years as larger year groups move on from the primary phase. This will require some capacity to be added on a temporary basis. Underlying this there are some schools which are always strongly over-subscribed, and others at risk of under-subscription because of geographic factors and parental preference. Where substantial surplus capacity arises, we will work with schools to make alternative educational use of under-utilised space.



Central Poole

Central Poole planning area comprises the whole of the area of the former Borough of Poole, except North West Poole. The planning area operates a two-tier primary/secondary system.

The schools in the planning area are: Cornerstone Academy, Magna Academy, Parkstone Grammar School, Poole Grammar School, Poole High School, St Aldhelm's Academy, and St Edward's Roman Catholic/Church of England School.



Past and forecast numbers for Central Poole secondary planning area

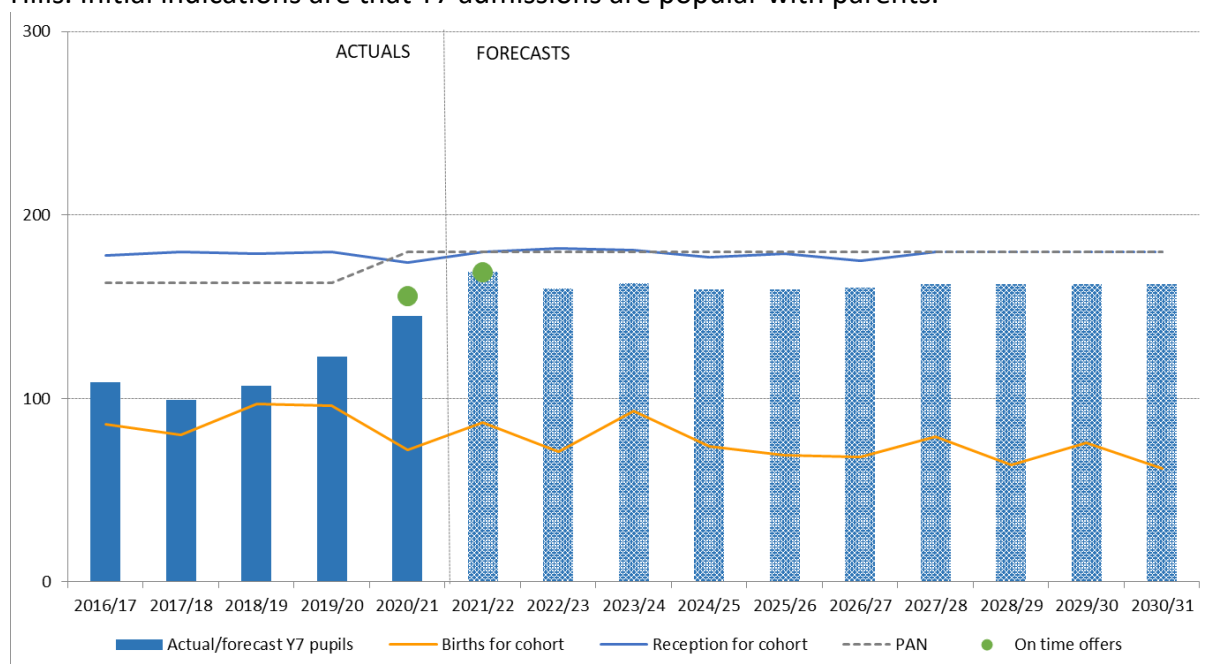
The chart shows that pupil numbers in Central Poole grew between 2016 and 2019 falling back a little in 2020 (solid blue bars). The ratio between numbers born eleven years previously (orange line) and reception year for the cohort (blue line) has been relatively stable. The number of on-time application offers of places has been a good predictor of the number of children subsequently on roll in Year 7. A bulge in secondary numbers is forecast for 2022 and 2023 (hatched blue bars), reaching the total published admission number for

the planning area (dotted line). It is therefore likely that there will be considerable pressure on places for those two years. The total number of Y7-Y11 pupils in the planning area is likely to remain above 2020 levels until 2027. The actual demand for places in Central Poole is also likely to be influenced by the position in the neighbouring planning areas of north west Poole and Bournemouth, as well as in neighbouring Lytchett Minster. It is highly likely that some of the additional demand in Central Poole will be met in north West Poole, Bournemouth, or elsewhere.

	2016/17	2017/18	2018/19	2019/20	2020/21	2021/22	2022/23	2023/24	2024/25	2025/26	2026/27	2027/28	2028/29	2029/30	2030/31
Year 7 (11+)	1,175	1,214	1,303	1,399	1,347	1,382	1,419	1,419	1,270	1,300	1,293	1,285	1,291	1,242	1,172
Year 8 (12+)	1,160	1,173	1,214	1,302	1,389	1,342	1,377	1,414	1,414	1,266	1,296	1,289	1,281	1,287	1,238
Year 9 (13+)	1,153	1,129	1,164	1,192	1,289	1,368	1,322	1,356	1,393	1,393	1,247	1,277	1,270	1,262	1,268
Year 10 (14+)	1,062	1,125	1,125	1,138	1,200	1,276	1,355	1,309	1,343	1,379	1,379	1,234	1,264	1,257	1,249
Year 11 (15+)	1,019	1,042	1,096	1,111	1,125	1,180	1,255	1,332	1,287	1,320	1,356	1,356	1,214	1,243	1,236
Total Year 7 to Year 11	5,569	5,683	5,902	6,142	6,350	6,548	6,728	6,831	6,707	6,659	6,571	6,441	6,319	6,290	6,163

North West Poole

North West Poole planning area comprises the area of the former Borough of Poole, which operates a three-tier primary/secondary system. The schools in the planning area are: Broadstone Middle School (Y7 and Y8) and Corfe Hills School (Y9 and above). It should be noted that Corfe Hills has a catchment area that extends into Dorset: as a result, it draws in pupils from outside BCP. It should also be noted that Broadstone Middle School has a PAN of 163 at Y5, and (since 2020) a PAN of 17 at Y7. This means that Y7 and Y8 can accommodate up to 180 children each. Because there is only one year's data to draw on forecasting the effect of this is subject to uncertainty, as is the consequential effect on Corfe Hills. Initial indications are that Y7 admissions are popular with parents.



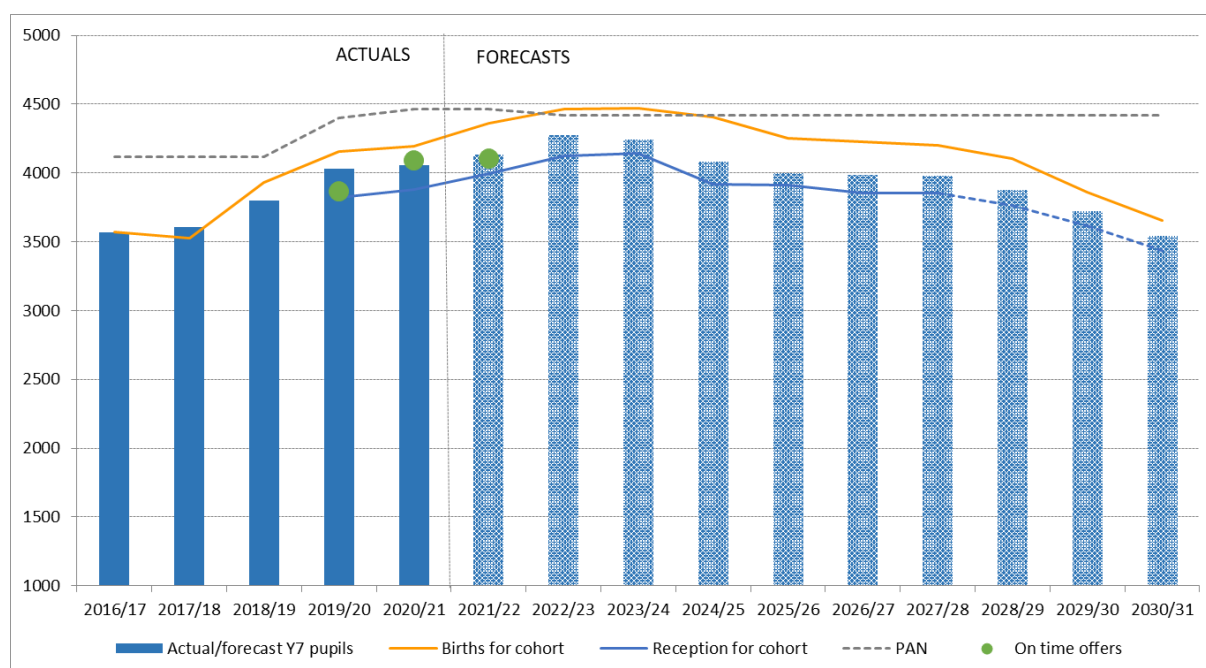
Past and forecast numbers for North West Poole secondary planning area

The chart shows that pupil numbers in north west Poole grew between 2017 and 2020 (solid blue bars). It should be recalled that for many pupils this does not involve a transfer of schools, but simply a progression from Y6 to Y7 at the same school, with additional pupils admitted in Y7. The ratio between numbers born eleven years previously (orange line) and reception year for the cohort (blue line) has been volatile. This is due to the small size of the planning area. The number of on-time application offers of places has been a good predictor of the number of children subsequently on roll in Year 7 to date. Forecast numbers beyond 2021 are very uncertain, because the long-term effect of the new Y7 admissions arrangements cannot be known. Y9 year groups are typically bigger than Y8, as the upper school admits children at Y9, including those from its catchment extending outside BCP. It is forecast that the increased pipeline of children through the middle school as a result of their Y7 admissions will lead to increased numbers at the upper school. The forecast may prove to be low, as there may be pressure arising in Central Poole increasing demand in the area.

	2016/17	2017/18	2018/19	2019/20	2020/21	2021/22	2022/23	2023/24	2024/25	2025/26	2026/27	2027/28	2028/29	2029/30	2030/31
Year 7 (11+)	109	99	107	123	145	169	160	163	159	159	161	162	162	162	162
Year 8 (12+)	120	105	101	114	122	147	171	162	165	161	161	162	164	164	164
Year 9 (13+)	256	235	222	195	207	237	285	332	314	320	314	313	316	319	319
Year 10 (14+)	256	261	229	233	201	211	242	291	339	321	326	320	320	322	326
Year 11 (15+)	301	253	251	224	234	198	208	238	286	334	316	321	315	315	317
Total Year 7 to Year 11	1,042	953	910	889	909	962	1,066	1,186	1,264	1,295	1,278	1,279	1,277	1,283	1,289

Bournemouth

Bournemouth planning area comprises the of the area of the former Bournemouth Borough Council. The planning area operates a two-tier primary/secondary system, with some all-through provision. The schools in the planning area are: Avonbourne Boys' Academy, Avonbourne Girls Academy, Bournemouth School, Bournemouth School for Girls, Glenmoor Academy, LeAF Studio, Livingstone Academy Bournemouth (opened September 2021), Oak Academy, The Bishop of Winchester Academy, The Bourne Academy, and Winton Academy.



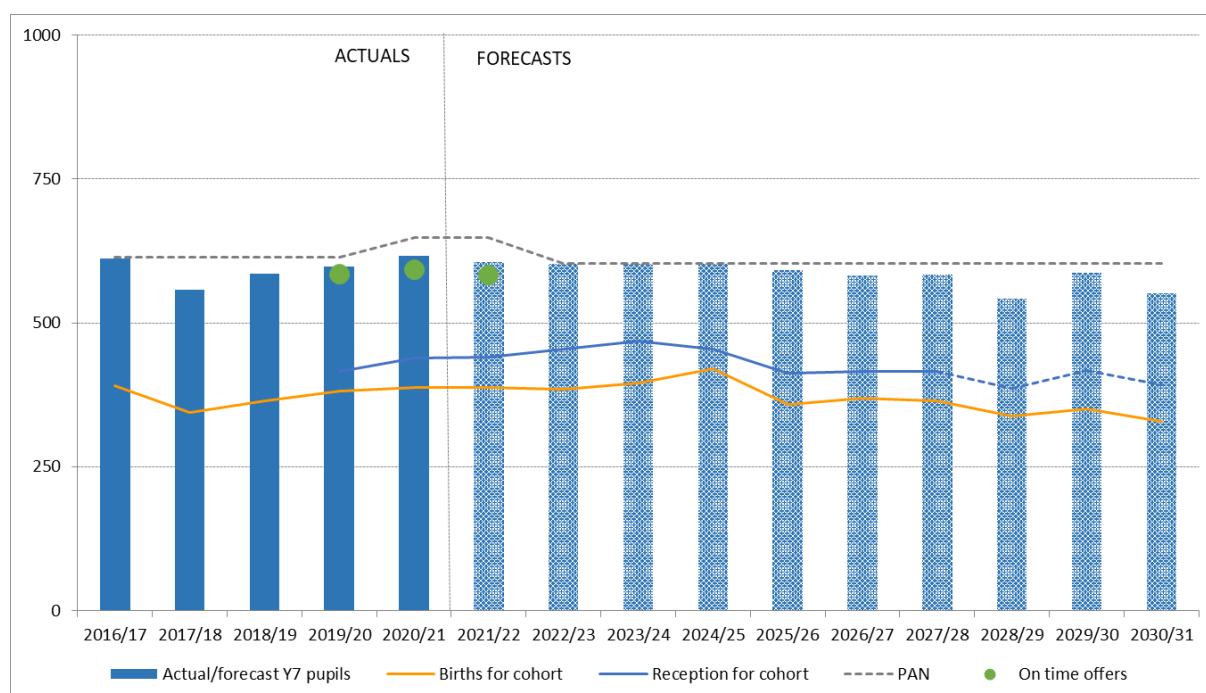
Past and forecast numbers for Bournemouth secondary planning area

The chart shows that Y7 pupil numbers in Bournemouth have grown since 2016 (solid blue bars). The ratio between numbers born eleven years previously (orange line) and reception year for the cohort (blue line) has been relatively stable. The number of Y7 admissions is generally higher than the number previously admitted to YR. This is mainly because children come into the area for the purpose of secondary education. The number of on-time application offers of places (green dot) has been a good predictor of the number of children subsequently on roll in Year 7. A bulge in secondary numbers is forecast for 2022 and 2023 (hatched blue bars). It is therefore likely that there will be considerable pressure on places for those two years. The total number of Y7-Y11 pupils in the planning area is likely to remain above 2020 levels until 2027. The actual demand for places in Bournemouth is also likely to be influenced by the position in the neighbouring planning areas of central Poole and Christchurch, as well as Dorset and Hampshire. With the opening of a new school there is additional uncertainty about future numbers. Initial indications are that the available places have been taken, but the effect on other schools is harder to measure. Although Y7 numbers are forecast to fall after the bulge, total Y7-Y11 numbers are expected to remain above 2020 levels for the whole forecast period as the bulge works through the secondary phase. As Bournemouth is geographically central, it is well placed to accommodate demand for places across the whole of BCP. The Avonbourne academies are planning to expand on a temporary basis to admit increased numbers in the bulge years.

	2016/17	2017/18	2018/19	2019/20	2020/21	2021/22	2022/23	2023/24	2024/25	2025/26	2026/27	2027/28	2028/29	2029/30	2030/31
Year 7 (11+)	3,566	3,606	3,798	4,030	4,053	4,133	4,277	4,244	4,082	4,000	3,987	3,977	3,879	3,720	3,539
Year 8 (12+)	3,487	3,545	3,586	3,791	3,983	4,031	4,109	4,253	4,220	4,054	3,972	3,958	3,951	3,852	3,695
Year 9 (13+)	3,637	3,590	3,668	3,652	3,868	4,083	4,156	4,256	4,392	4,361	4,195	4,112	4,099	4,094	3,995
Year 10 (14+)	3,421	3,605	3,565	3,636	3,652	3,852	4,069	4,144	4,242	4,380	4,349	4,180	4,094	4,081	4,079
Year 11 (15+)	3,484	3,355	3,515	3,507	3,592	3,589	3,782	3,993	4,065	4,165	4,297	4,267	4,106	4,024	4,012
Total Year 7 to Year 11	17,595	17,701	18,132	18,616	19,148	19,688	20,393	20,890	21,001	20,960	20,800	20,494	20,129	19,772	19,320

Christchurch

Christchurch planning area comprises the whole of the area of the former Christchurch Borough Council, a district formerly in the Dorset Council area. The planning area operates a two-tier primary/secondary system. The schools in the planning area are: Highcliffe School, The Grange School, and Twynham School.



Past and forecast numbers for Christchurch secondary planning area

The chart shows that pupil numbers in Christchurch have grown since 2017 (solid blue bars). The ratio between numbers born eleven years previously (orange line) and reception year for the cohort (blue line) has been relatively stable. The number of on-time application offers of places (green dot) has been a good predictor of the number of children subsequently on roll in Year 7. A bulge in secondary numbers is forecast for 2022 and 2023 (hatched blue bars), reaching the total published admission number for the planning area (dotted line). It is therefore likely that there will be considerable pressure on places for those two years. Some of this will be displaced back to Bournemouth. A significant number of children come into the Christchurch area from the New Forest district of Hampshire. The total number of Y7-Y11 pupils in the planning area is likely to remain above 2020 levels until 2026. The actual demand for places in Central Poole is also likely to be influenced by the position in the neighbouring planning area of Bournemouth, as well as in neighbouring New Forest. It is highly likely that some of the additional demand in Christchurch will be met in Bournemouth.

	2016/17	2017/18	2018/19	2019/20	2020/21	2021/22	2022/23	2023/24	2024/25	2025/26	2026/27	2027/28	2028/29	2029/30	2030/31
Year 7 (11+)	611	558	586	598	617	605	603	603	603	592	582	584	543	586	551
Year 8 (12+)	616	614	560	591	600	620	608	606	606	606	595	585	586	545	589
Year 9 (13+)	580	610	596	559	584	593	612	601	598	598	598	588	578	579	539
Year 10 (14+)	556	563	599	589	555	576	585	604	592	590	590	590	580	570	571
Year 11 (15+)	559	544	550	588	576	543	564	572	591	580	578	578	578	567	557
Total Year 7 to Year 11	2,922	2,889	2,891	2,925	2,932	2,937	2,972	2,985	2,991	2,966	2,943	2,924	2,864	2,848	2,807

Parkfield

Parkfield is a planning area which covers a large geographical area including Bournemouth Airport. It is sparsely populated. The only school in the area draws its pupils from well beyond the immediate locality – across the whole of BCP and from neighbouring local authority areas. It offers a Montessori approach to education, and recruitment is mainly driven by parental preference for the specific ethos of the school. A forecast is likely to be misleading, as the methodology relies heavily on a reasonably long time series of data, which does not exist, and on geography, which is a less important factor for recruitment to Parkfield. In practice numbers are likely to remain at or above current levels assuming parents continue to seek the type of education offered.